

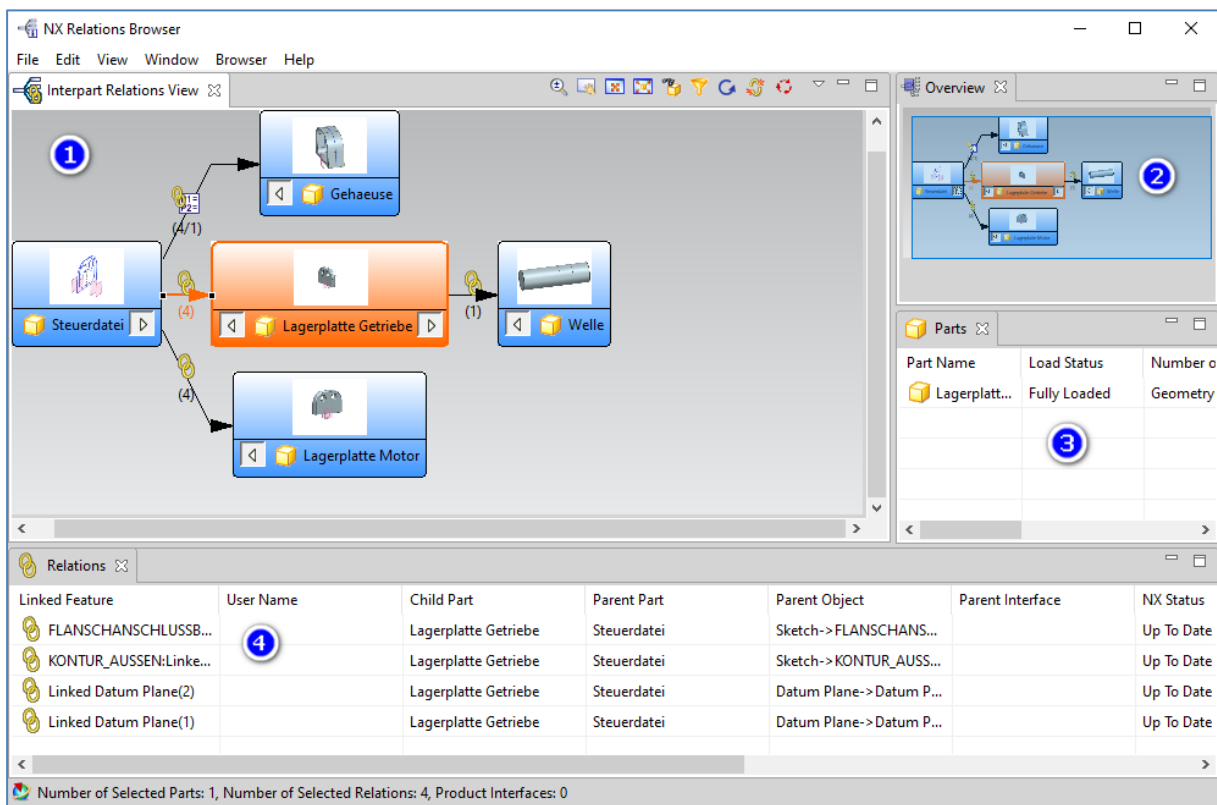
NX Relations Browser



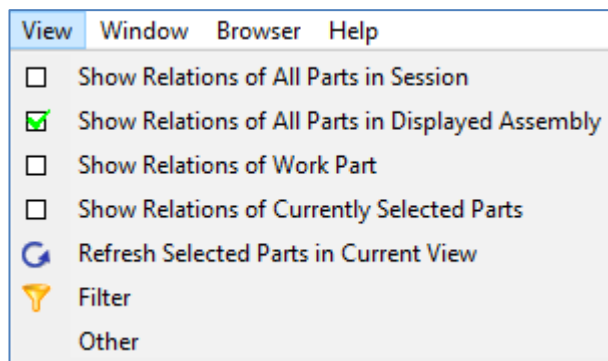
The **Wave Geometry Linker** can be used to create links between part files in NX. This can be done with different element types, such as reference elements, sketches, surfaces, solids and some more. If such links have been used in an assembly or a part file, you will certainly want to find out more about the destination and sources of these links at a later date. With this in mind, it makes sense to use the **Relationship Browser** in NX.



This browser is an analysis tool that can be used to examine relationships and product interfaces. The results are displayed graphically and in list form.



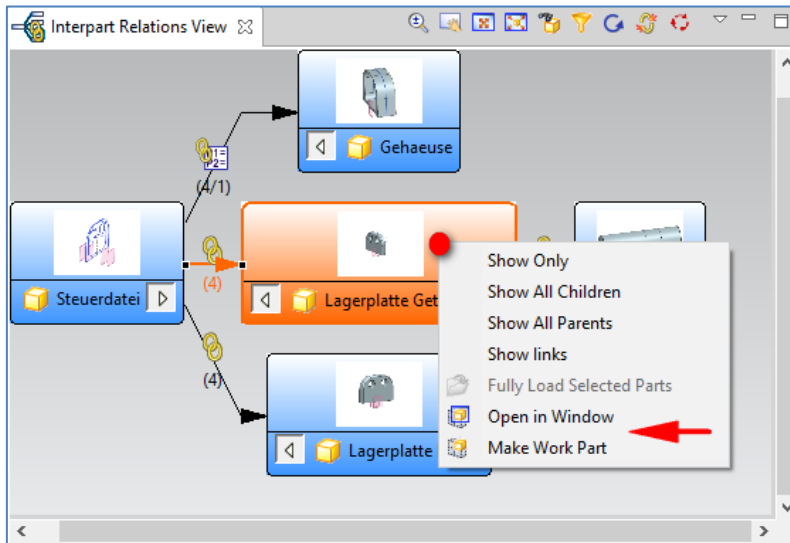
(1) The parts and links are displayed graphically in the “**Interpart Relations View**” window. The content to be displayed is defined in the “**View**” pull-down menu:



Functions for controlling the content are offered in the top frame bar:



If you select a part in the graphical display with the right mouse button, a pull-down menu opens in which you can activate this part or open it in its own window.



Parts and/or the connecting arrows can be selected. The relationships are listed according to this selection.

- (2) If you zoom in the window (1), the “**Overview**” window (2) always displays the overall view with the zoom area marked.
- (3) The marked parts that the user has selected for the relationship search are listed in the “**Parts**” window. Several parts can also be selected or deselected using the **CTRL-Key** (for possible contents, see image below).

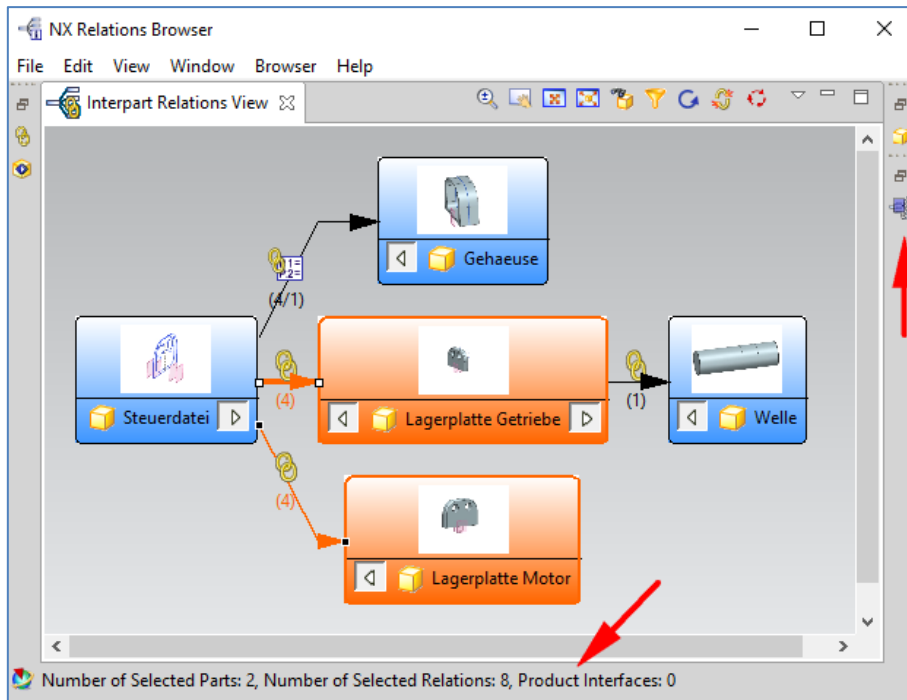
Part Name	Load Status	Number of Rel...	Checked Out By	Release Status	Name	Description
Lagerplatt...	Fully Loaded	Geometry(4)/ ...				
Lagerplatt...	Fully Loaded	Geometry(4)/ ...				

- (4) The “**Relations**” window displays a lot of information about the relationships of the selected parts. You can use the right mouse button functions to edit links or break connections (see image below). Not all columns can usually be displayed in the window, i.e. you can move the lower frame bar to the right with the left mouse button, for example.

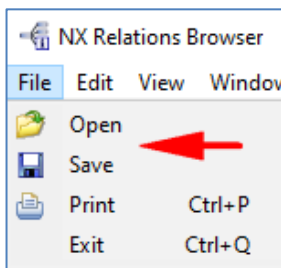
Linked Feature	User Name	Child Part	Parent Part	Parent Object	Parent Interface	NX Status	Type
FLANSCHANS...		Lagerplatte Getriebe	Steuerdatei	Sketch->FLANSCHANS...		Up To Date	WAVE Link (Position De...
KONTUR_AUSSEI...		Lagerplatte Getriebe	Steuerdatei	Sketch->KONTUR_AUSS...		Up To Date	WAVE Link (Position De...
Linked Datum Plane...		Lagerplatte Getriebe	Steuerdatei	Datum Plane->Datum P...		Up To Date	WAVE Link (Position De...



The individual windows can be shown/hidden or maximized/minimized using the familiar Windows functions. Minimized windows can then be found in the top right frame bar as small icons (see image below). The top icon can be used to restore the basic settings.



At the bottom of the dialog box is a **status bar** with information on the selection.



Executed analyses can be saved as an xml file under the **“File”** pull-down menu and called up again later.

Print” is also offered under ‘File’.

Note: If you are working with NX native, the parts must be fully loaded.

I would be delighted if this NX Smart tip was useful to you.
Do you have any questions? Just get in touch with me.



Your NX Trainer, Consultant and Service Provider

Dipl.-Ing. Hans-Jörg Seeland

SEELAND Informatik GmbH

Lessingstr. 16

68535 Edingen-Neckarhausen

+49 (06221) 893900

E-Mail: seeland@seeland-gmbh.de

Internet: www.seeland-gmbh.de