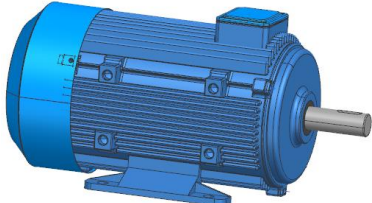
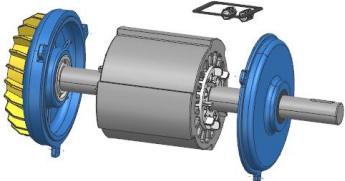
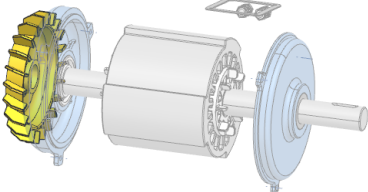


Bookmarks in NX

Some NX users have already come across the "Bookmarks" item, but what is it and what can I use it for?

The bookmarks can be used to save assembly statuses and many display settings and retrieve them later. You are working on a larger assembly and have only loaded the parts relevant to your work. If you now close the assembly, these old visual settings will be lost by default the next time you load it. You can use bookmarks to save exactly these visibility and display settings for the components of an assembly. This allows you to restart the assembly the next day with the same settings and continue your work.

NO Bookmarks	Bookmark 1 Components hidden, the main assembly node is active.	Bookmark 2 Components hidden, the fan is an active part.
		

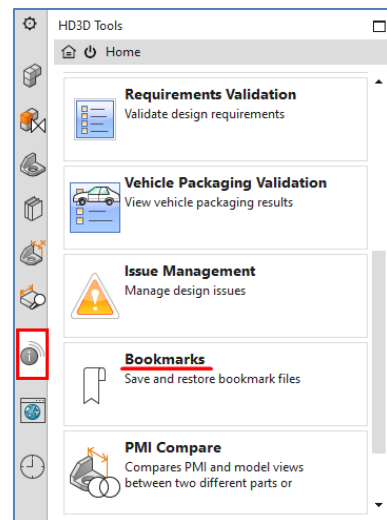
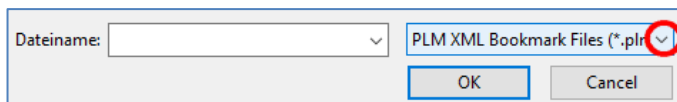
What information is stored in bookmarks?

- the currently defined session component groups
- the assembly loading options applied
- hidden or shown parts and subassemblies
- used reference sets for all component levels
- the currently displayed active part (or subassembly) of the assembly
- the status of expanded/collapsed parts in the assembly navigator
- a variety of display settings such as scale and orientation of the view

The best way to save and recall bookmarks is via the HD3D tools (see image on the right). These can be found as a tab on the edge of the NX screen (however, the `nx_visual_reporting` license is required).

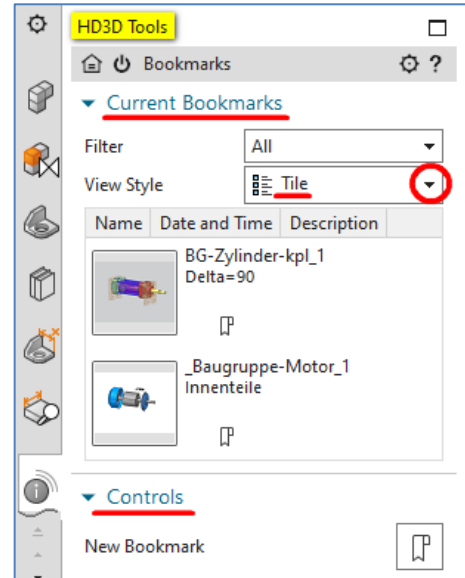
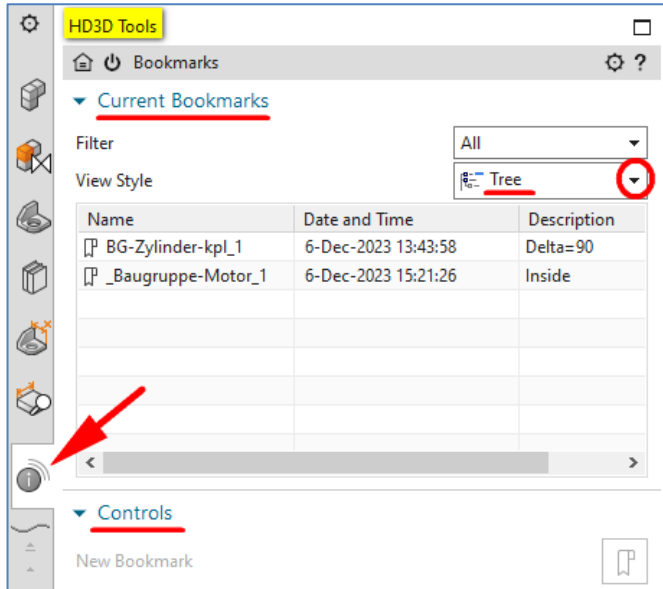
Alternative:

You can also create these via "File + Save + Save Bookmarks" and open them again via "File + Open" as a `name.plmxml` file. Here you must pay attention to the file type settings, which is set to "Part files (*.prt)" by default (see image below).



In the following text, I refer to the more convenient way of working with the HD3D tools.

In the „HD3D Tools“ tab, you can use the view style to set the display of existing bookmarks in the **“Current Bookmarks”** tab as desired, e.g. as a tree list or as a tile (see images below). By selecting a bookmark, the corresponding assembly with all saved parameters is now reloaded.

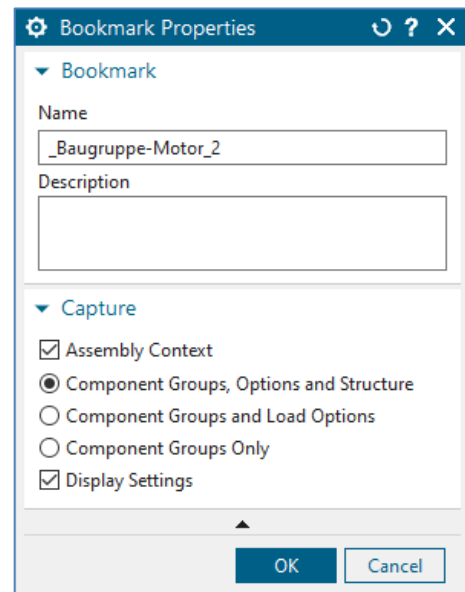


Under the „**Controls**“ tab and the **“New Bookmark”** item, you can create a bookmark for the currently active assembly. The dialog box shown in the image on the right opens.

If the „Assembly Context“ checkbox is selected, you can choose from the following three options:

- Component Groups, Options and Structure
- Component Groups, and Load Options
- Component Groups Only

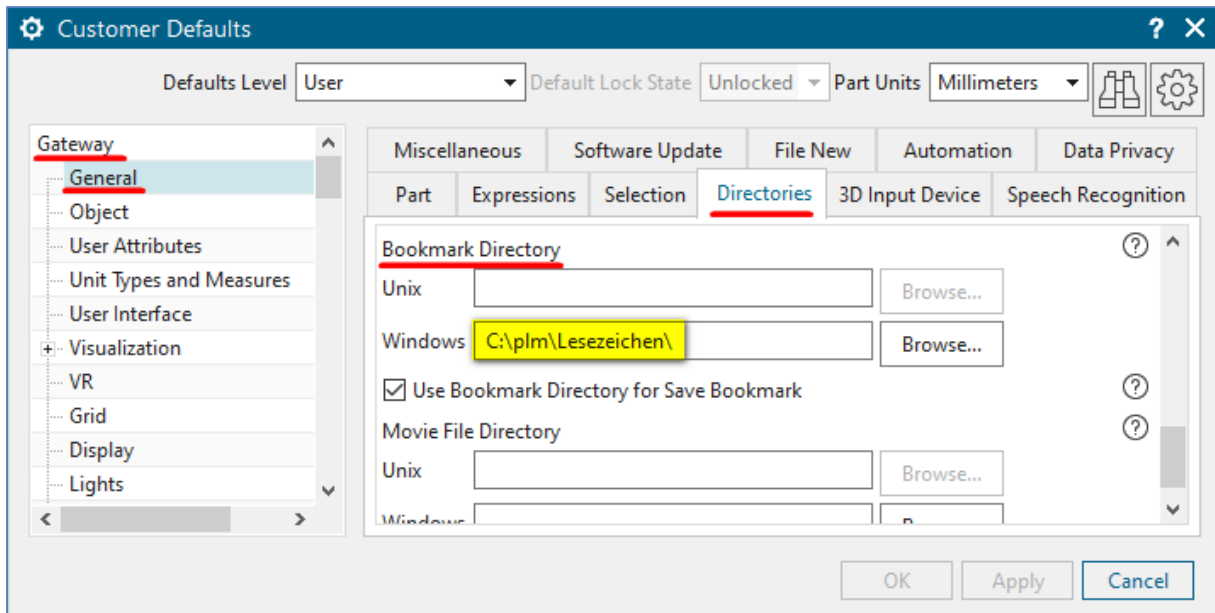
Click **„OK“** to create the bookmark.



When the bookmark is saved, an image file in jpg format is automatically generated as a preview image.

The default directory for bookmarks can be defined in the user standards:

File + Utilities + Customer defaults + Gateway + General + Directories ...

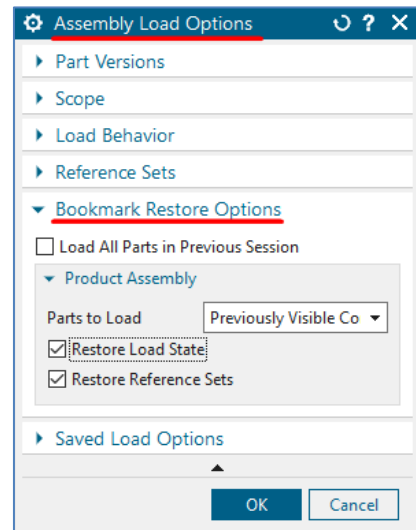


When **loading bookmarks**, the loading options for assemblies shown in the image on the right can be set.

If the „**Load All Parts in Previous Session**” checkbox is not set, you can control the parts to be loaded using two options. These are “**Previously Visible Components**” and “**Previously Loaded Components**”.

You can also restore the charging status (fully or partially charged) and the previously set reference sets of the components of an assembly.

If components have been added to the assembly in the meantime, it is advisable to **update the structure** in the Assembly Navigator.



I would be glad if this NX Smart Tip was useful for you.
Do you still have questions? Just contact me.



Your NX trainer, consultant and service provider

Dipl.-Ing. Hans-Jörg Seeland

SEELAND Informatik GmbH

Lessingstr. 16

68535 Edingen-Neckarhausen (Germany)

+49 (06221) 893900

E-Mail: seeland@seeland-gmbh.de

Internet: www.seeland-gmbh.de